

From: **CSRG** contactpatch@csrgweb.org
Subject: **CSRG** Late Braking News
Date: September 3, 2016 at 2:12 PM
To: lockedeb@comcast.net



Classic Sports Racing Group - Vintage Racing Since 1968

CSRG's "Contact Patch"

Dear Locke,

**One Month to Go!!!
13th Annual Charity Challenge
Sept. 30-Oct. 2**





How's the Car Prep Going?

Here's hoping you can join us at Sonoma Raceway in thirty days. The Charity Challenge has become our signature event, plus it's all-time, new & improved, giant economy sized blast on the racing horizon. A great dinner is planned, the charity rides are on for both Saturday & Sunday, we have MG as a featured group, plus all the usual racing misfits will be there.

What do you plan to do---stay home & check your Social Security statements, get a jump on hanging Christmas lights, lube your Stairmaster? Come on, do something that has some soul in it! Racing requires commitment, so show that you still have some! Do not go gentle into that good night, come racing!!!!

This is your club, so please support it.

Click here to enter the Charity Challenge:

[Enter](#)

=====

[Stand21 Helmet Donated to the Charity Raffle](#)





Part of the money we raise for the Sonoma Chapter of the Speedway Children's Charities is derived from the weekend raffle. At this year's race we have a very special raffle item donated by Stand21.

This is a dual standard FIA 8860/SA2015 helmet that retails for \$3,250. & considered to be the safest helmet in the world. It is the same helmet and standard required and used by Formula 1 and Indy drivers. It is a thicker and more technically advanced shell due to the dangers of the open wheel nature in those series. Here is some more data:

Technical data:

Full carbon fiber shell

Kermel (fire resistant) inner padding

3mm polycarbonate visor, fire and impact tested

EPP (Expanded Polypropylene) memory liner for a longer life and protection in multi-impact crash

SNELL SA 2015 & FIA 8860-2010 standards

Custom fitting pads, can fit size 57-65cm

Delivered with:

- 1 peak
- 1 clear visor



Click here to see the finest in race wear: [Stand21](#)

=====
Helmets



CSRG will accept 2005 Snell Certified helmets through 2016, but for 2017 only Snell Certified 2010 & 2015 helmets will be accepted.

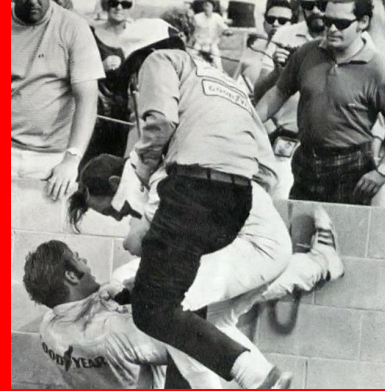
All helmets (Snell certified 2005, 2010 & 2015)



All helmets (Shel certified 2009, 2010 & 2011) must have the 'SA' designation to show they are designed for automobile racing. The 'M' designation, for motorcycles, is not allowed.

Drivers' Meetings

CSRG Drivers' Meetings have always been compulsory. Drivers who attend the meeting will be given a sticker to put on their helmet which will allow them to go on track for their session. Drivers without stickers will not be allowed on track.



=====

Classifieds

(Instructions for placing an ad follows the classifieds)

1972 F Production MG Midget



Originally constructed in 1974 by Huffaker Engineering's fabricator and mechanic, Mark Blaze, to replicate team of Full, no expense spared restoration and update in 2014-15 by Mark. Fresh Huffaker built 1275 engine, rebuilt dog-ring 4 speed transmission, new Tran-X differential, two sets of wheels (for 1966 and 1972 SCCA regulations). Very successful in SCCA, the later VARA and SVRA. Asking \$45,000. Tr

and/or trailer also available. Please contact Mark at 925.548.7495 or at: markblaze11@comcast.net

Brabham BT14 Formula B Car

1965 Brabham BT 14, s/n FL-9-65. Low Hours on Crowther Lotus TwinCam Engine Rebuild, Taylor Engineering Hewland Mk 9, 5-Speed Trans/Axle Rebuild. \$79,500. Documented History, Spares. American Livery. Contact Pat Moran at 650.321.6950 or at prm18@sbcglobal.net



1962 Huffaker MKV Genie-Corvair



The only Corvair powered Genie built by Huffaker. Accepted at all vintage events for \$149K. For more details please call Ed Lamantia: [707-935-0533](tel:707-935-0533)

1964 Lotus Super Seven

LHD chassis # SB1754. Continuous race and ownership history from new with logbooks. Ready to race with correct non crossflow motor with dyno results and build sheets. Also comes with all original road equipment spare wheels etc. Asking: \$35K. Call or email for more info and photos Fred [360-770-2279](tel:360-770-2279) or email: giuliasuper1967@aol.com



Lotus 69 Formula Atlantic with History



Lotus 69 with fresh Hasselgren BD Hewland FT200. Restored in 2013 to the highest level. This is a period correct car with a Players Atlantic history. Contact Jon Norman at: 510.525.9435 or at jrnscrg@alfapartscatalog.com

1963 Falcon Competition Model

For Sale: Beautiful and rare Falcon Shells Competition Sports Racer. Built in '62-'63, only 2 or 3 made. Front engine, 1300cc Cortina, dual Webers (Steve Jennings), Tilton clutch, Cortina transmission and rear-end. VARA logbook. \$39,000 OBO. For Falcon history click here: [Falcon History](#). Detailed pics are available by clicking here: [Falcon Pics](#) Contact Joe Morrison at 303-919-5627 or 303-838-3518 or email: 4joemor@gmail.com



Two from Fantasy Junction

Fantasy Junction has always been a great supporter of CSRG, plus they have so many delectable cars on their site that they deserve a mention.

1959 Hagemann-Sutton Special



HUGE PRICE REDUCTION! A Highly competitive One-Off Vintage Race Car with Fascinating History Click [here](#) for more details.

Lotus 22 Formula Junior





Restored and Campaigned in CSRG, SVRA, HMSA and SCCA Events. Track Ready and Fully Eligible Under FIA and FJHRA Regulations. Spares. Click [here](#) for details.

Butch Gilbert's Triumph Vitesse Trans-Am Car



British Leland Factory car prepared by Kastner for the 1971 series. A fresh TR6 2.5 engine with 3 Webers measuring 211 HP at the rear wheels and a Housen 5-speed. Upgraded suspension & lots of spares. Including race prepared 2.0 GT engine and TR6 transmission with Dolom CR gears plus a second set of Panasports \$45,000. Sharon Gilbert: [209-894-3949](tel:209-894-3949) email: bsgil99@hughes.net

Butch Gilbert's 1964 Elva Courier Mk4T

Well prepared with a fresh 1800 5-main MGB with Carrillo rods, JE pistons, cross-drilled crankshaft and gated pan. 4-Syncro MGB CR gearbox with improved ratios. Independent rear suspension and LSD. Both front and rear suspensions have been upgraded with double adjustable shocks, heavy duty spindles, uprights and stub axels. Spares including a set of Panasport wheels \$30,000 Sharon Gilbert [209-894-3949](tel:209-894-3949) bsgil99@hughes.net



1971 Titan Mark 6 (Formula Ford), Chassis: #71635

When I purchased the Titan it had zero hours on the Jay Ivey engine. Since then I have raced it in two CSRG race weekends in 2013, six CSRG and HMSA race weekends in 2014, and



CSRG and IMSA race weekends in 2014, and two in 2015. Maintained by John Anderson Racing at Sonoma Raceway. Spare body and spare nose. Would trailer the car for the new buyer to Sonoma Raceway or equivalent. Paul Richins Ph: [916-933-1898](tel:916-933-1898), email: prichins@jps.net \$32,500/flexible.



Huffaker-Tommy Bahama Corvette

HUFFAKER - TOMMY BAHAMA CORVETTE
 Professionally built to represent the Tom Gloy Racing
 2002 SCCA Trans-Am Winner
 Commissioned by a gentleman racer who used it to dominate his competition
 in SCCA GT-1 Racing
 The entire package has been expertly maintained with no regard for cost
 A complete turnkey race team ready for you to run at the front in either
 SCCA or Vintage Racing

CORVETTE

HUFFAKER - TOMMY BAHAMA CORVETTE
 Race winner in SCCA GT-1 or Vintage Racing

SPECS

Huffaker Engineering Chassis	Complete air lock system
High output 2000cc 192 774 HP V8	SCCA corner lock system - 12 sets
Brushless distributor	SCCA corner lock system - 12 sets (last stock)
Revised 3 point gearbox	New fire pump - 2000 L/hr
Three clutch	Roll over protection
Alum four point brakes	Complete radio package
Roll over protection	Roll over protection
Penske 2000 drive way shocks	Roll over protection

SPARES/TOOLS

Fire extinguisher	Wrenches
Good tools	Motor oil
Wheel nuts	Jack & jack stands
Tire	Roller box of complete tools
	Set of pliers

Professionally built to represent the Tom Gloy Racing 2002 SCCA Trans-Am Winner. Commissioned by a gentleman racer who used it to dominate the competition in GT-1 racing. The entire package has been expertly maintained without regard to cost. A complete turnkey race team ready for you to run at the front in either SCCA or vintage racing. [Click here](#) for larger view. Call: 707.935.0533

TRAILER

2008 Haulmark 40 ft. Coopertech
 Right side double doors
 Polished aluminum diamond plate floor
 Polished outside corner trim and bulkheads
 Laminated white interior walls
 Factory installed upper & lower cabinets
 Factory installed interior lighting
 Factory installed nitrogen adjustable exterior work lights
 Full length security
 Adjustable lock & hold 12" (ing) tie downs
 Electric hydraulic landing gear
 Camlock doors
 Alloy wheels including spare
 Air compressor
 Honda electric start generator

AVAILABLE FOR IMMEDIATE SALE OR LEASE

FOR SALE Street car tracks considered
 FOR LEASE with full transportation and track maintenance provided by Huffaker Eng
 © 2014 Trans-Am Chevrolet
 CONTACT: Joe Huffaker • Huffaker Engineering • 707.935.0533

1970 Winkelmann WDF2-44 Formula Ford



Professionally built and maintained throughout its life. Comprehensively overhauled in the spring of 2013. Stripped to bare chassis, crack checked, repaired and powder-coated. New Aluminum floor. It has a fresh I engine, new fuel cell, new seat, fresh paint, widened body at shoulders, new Penske shocks and new springs, rod ends, suspension bolts, donuts, oil tank and lines, and much more detail work. Fully set up, corner-weighted, bump-steered etc. Four race weekends since

rebuild. It has an SCCA log book documenting it back to 92 and a continual CSRG logbook. Asking \$25,000 For details contact Dan Wardman 408.836.4

1972 Royale RP16

Vintage Formula Ford chassis number 4. We have had the car since 2011 and raced it 8 weekends. It has an Ivey engine that was fresh when we got the car. The gearbox is a Webster/Hewland. The suspension has just been completely



The suspension has just been completely rebuilt after a 3 car tangle in 2014. The bodywork has just been stripped and repainted. It has a new nose cone and a spare. It has just been fully corner-weighted bump-steered and aligned. This car is fully race prepped and ready to go. It is an excellent example of a vintage ford ready for many more years of racing. Asking \$21,500. For more details contact Dan Wardman 408.836.4537



Want to place an ad?

Here are the guidelines:

- **Ads are available only to CSRG members & are free of charge.**
- **No dealer ads.**
- **Ads will run for 4-6 CPs, depending upon volume.**
- **The ads are for race cars only. No street car ads, parts ads, etc.**
- **Adds should be 50-60 words, not including contact info. Include contact link, be it an email address, home phone, cell phone, etc**
- **At the very least include a first name.**
- **It would be nice to have a link to a more detailed description on another site.**
- **Include an asking price.**
- **Include a photo.**

Email your ad to csrglocke@gmail.com.

Memberships

Make sure you've renewed your membership for next season. 2016 Full Race Membership is \$150. Current members get preferential treatment if there is a car number conflict in a run group, as do people who enter early. To see if you already renewed, look at the membership expiration date in your Profile at csrg.motorsportreg.com. Even if you renewed by mail, your Profile will have been updated. Alternatively, you can call the Race Director at 888.268.7126, email him: race_director@csrgweb.org

Associate Member Benefits: The CSRG Board of Directors agreed that registered Associate Members should receive two complimentary gate tickets for CSRG race events (face value \$160 a year) and should have the opportunity to purchase additional tickets at the Guest of Entrant price, which is currently \$10. Associate Member dues for 2016 are \$60. If you are not certain whether you are registered as an Associate Member for 2016, e-mail either race_director@csrgweb.org or Registrar@csrgweb.org.

To the land we love and the love we land

Mort Canard

Miscellaneous Information

Membership Renewals: If you can't remember whether you renewed for this season, you can check your Profile at [CSRG MotorsportsReg](#) or ask the Race Director.

Tech inspection sheets

You can get a head start on your Tech Inspection tasks by downloading the PDF Tech Inspection Forms. These forms are not meant to replace the sheets you will receive by e-mail with your information packet but are provided as information and as a work sheet so you may inspect and gather all the data necessary to complete the official form. Click [TechWorksheet](#) to print your copy of the worksheet.

Event registration

Click here to be directed to [CSRG.MotorsportReg](#) for online registration. Be sure to bookmark or save it as a favorite for quick access in the future. Mail-in forms can be obtained by clicking on the "Event Schedule" button on our home page at [www.CSRGracing.org](#) or by clicking on: [EventSchedule](#). Note: Mail-in entry forms are specific for each event and will usually appear on the site 6 to 8 weeks before an event.

Entrant Packets

All race entrant packets for CSRG events, including Tech Forms and gate tickets will be held at Will Call outside the track security/ticket gate or at Registration. We are no longer mailing them to entrants. The packets are held in the name of the Entrant. We advise you to print a copy of the [Tech Worksheet](#) to make sure you have completed all the inspections and have all the information needed to complete the Tech Forms when you arrive at the track.

Download Medical Forms

Click on [CSRGmedform13.pdf](#) to download a copy of the form. You do not need to send in the original Medical Form with the "wet" signature to CSRG. You can now keep your original and either mail a clear photocopy or, better yet, scan the complete four page form and email it to: Race_Director@csrgweb.org.

It would be wise to file the original until its medical certification period expires. The scan and email system is the preferred method, otherwise mail the form to CSRG at P.O. Box 3223, San Rafael Ca. 94912.

Email Race_Director@CSRGweb.org if you have problems or additional questions.

Mailing Address:

CSRG, P.O. Box 3223, San Rafael, California 94912.

Medical Cards for Guest Competitors:

CSRG recognizes current and valid medical cards as issued by FIA, SCCA (for drivers under 60 only), and all organization members of the Vintage Motorsport Council.

New Members?

We welcome drivers who believe in the spirit of vintage racing. Curious? Do you want to join CSRG or need more info? Email race_director@csrgweb.org go to www.CSRGracing.org.

[Join our Mailing List!](#)

Images are best viewed on a large screen. Historical images are sourced from itsawheelthing.tumblr.com. No commercial gain is intended or desired by CSRG from the display of images, historical or otherwise, in Contact Patch. All rights of these images belong to and remain with their owners.

CSRG, www.CSRGracing.org, P.O. Box 3223, San Rafael, CA 94912

SafeUnsubscribe™_locked@comcast.net

[Forward email](#) | [Update Profile](#) | [About our service provider](#)

Sent by contactpatch@csrgweb.org in collaboration with

Constant Contact 

Try it free today